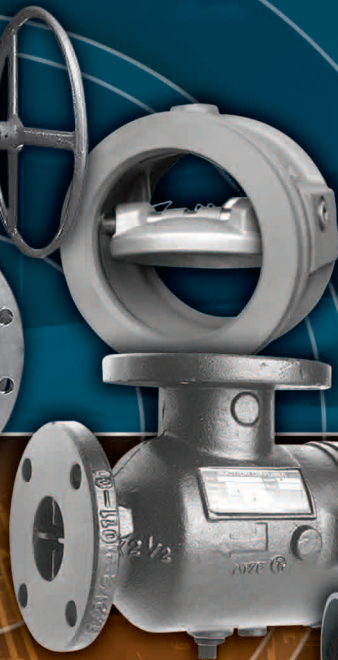
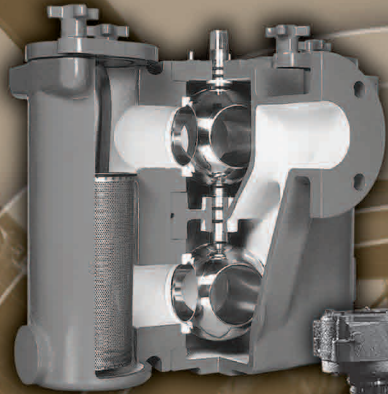


# GENERAL CATALOG



**Mueller** Steam Specialty™



## TABLE OF CONTENTS

<b>SPECIAL APPROVALS</b> <i>Fireline, ABS, API and Special Specifications. ....</i>	2
<b>SPECIAL APPROVALS</b> <i>Military Specifications .....</i>	3
<b>TEMPLATES FOR DRILLING</b> <i>150 lb., 300 lb. and 600 lb. steel standards .....</i>	4
<b>FLANGE BOLTING DATA</b> <i>For Butterfly Valves .....</i>	5
<b>"Y" TYPE STRAINERS</b> <i>Cast Iron, Bronze, Cast Steel, Stainless Steel .....</i>	6
<b>BASKET TYPE STRAINERS</b> <i>Cast Iron, Bronze, Cast Steel, Stainless Steel .....</i>	9
<b>DUPLEX STRAINERS</b> <i>REVOLUTIONARY BALL - PLEX™ .....</i>	10
<b>SPECIAL STRAINERS</b> <i>Cast Iron, Bronze .....</i>	12
<b>FABRICATED STRAINERS</b> <i>Quick Acting Line Blinds .....</i>	13
<b>PUMP PROTECTION</b> <i>Control-Chek®, Suction Diffuser .....</i>	15
<b>CHEXTER® CHECK VALVE .....</b>	16
<b>SILENT CHECK VALVES</b> <i>Compact Wafer &amp; Wafer Globe Type .....</i>	19
<b>SURE CHECK® VALVES</b> <i>Double Disc Check Valves .....</i>	23
<b>BUTTERFLY VALVES</b> <i>Wafer Style, Full &amp; Semi Lug Style .....</i>	25
<b>LOCXEND®</b> <i>Grooved End Products .....</i>	27

## ABOUT MUELLER STEAM SPECIALTY

Beginning in New York City as a small specialty manufacturer servicing the valve industry, Mueller Steam Specialty incorporated in 1956 to start manufacturing pipeline strainers. Since then, the company and its product offering have expanded dramatically. The company moved to North Carolina in 1972 and due to its continued growth, moved again in 1992 to a new and larger facility in St. Pauls, North Carolina. There are now over 300,000 square feet of ISO 9001:2000 registered manufacturing space devoted to Mueller's various product lines. In addition to a full range of pipeline and specialty strainers, the company now manufactures a broad offering of check valves and butterfly valves.

### Mueller Joins the Watts Family

In December 2005, Mueller became a part of the Watts Water Technologies, Inc. family of companies. The resources and support that Watts has added to Mueller have enabled the company to consolidate previous efforts while at the same time plan for future growth and expansion in products and services.

### Mueller Today

Today, Mueller Steam Specialty is the world's largest supplier of strainers and the number one provider of specialty products serving the valve industry. While the company has seen many changes, the dedication to quality, service and delivery remains the same. As always, Mueller Steam Specialty brand strainers and valves will continue to be the premier products of their kind in the marketplace.

## TRADEMARKS:

- Viton® is a trademark of DuPont Performance Elastomers, L.L.C.
- Teflon® is a trademark of E. I du Pont de Nemours and Company Corporation
- Rilsan® is a trademark of Arkema Corporation
- Monel® is a trademark of Inco Alloys International, Inc.
- Inconel® is a trademark of Inco Alloys International, Inc.
- Stellite® is a trademark of Deloro Stellite Holdings Corporation
- Kynar® is a trademark of - Arkema, Inc.
- Halar® is a trademark of - Ausimont USA, Inc.
- Hypalon® is a trademark of - Dupont Performance Elastomers L.L.C.

### How To Order

- 11 Duplex Strainers
- 17 CHEXTER® Check Valve
- 22 Silent Check Valves
- 24 Sure Check® Valves
- 26 Butterfly Valves
- 28 LOCXEND®

### Ordering Information

Important: To assist you in ordering the proper product for your application, the following information is necessary: operating pressure, temperature, flow rates and/or velocity and the type of service used.

## SPECIAL APPROVALS - FIRE LINE, ABS, SPECIAL SPECIFICATIONS, AND API

### STRAINERS

APPROVAL TYPE	MODEL	SIZE		DESCRIPTION
		<i>in.</i>	<i>mm</i>	
FM	595	4, 6, 8	100, 150, 200	Cast Iron body, Class 125, basket strainer, flanged ends
UL	595	4, 5, 6, 8, 10, 12	100, 125, 150, 200, 250, 300	Cast Iron body, Class 125, basket strainer, flanged ends
UL	911U	2½, 3, 4, 5, 6, 8, 10, 12	65, 80, 100, 125, 150, 200, 250, 300	Cast Iron body, Class 125, "Y" strainer, flanged ends
UL	911U	2½, 3, 4, 5, 6, 8, 10, 12	65, 80, 100, 125, 150, 200, 250, 300	Cast Steel body, Class 150, "Y" strainer, flanged ends

### SURE CHECK VALVES

APPROVAL TYPE	MODEL	SIZE		DESCRIPTION
		<i>in.</i>	<i>mm</i>	
FM	71	2, 2½, 3, 4, 5, 6, 8, 10, 12, 14, 16	50, 65, 80, 100, 125, 150, 200, 250, 300, 350, 400	Cast Iron body, Class 125, wafer type double disc check valve
FM	72	2, 2½, 3, 4, 5, 6, 8, 10, 12, 14	50, 65, 80, 100, 125, 150, 200, 250, 300, 350	Bronze, Carbon or Stainless Steel, Class 150, 200, 250, 300, 350 wafer type double disc check valve
FM	74	2, 2½, 3, 4, 5, 6, 8, 10, 12, 14	50, 65, 80, 100, 125, 150, 200, 250, 300, 350	Bronze, Carbon or Stainless Steel, Class 300, wafer type double disc check valve
UL	71U	4, 6, 8, 10, 12	100, 150, 200, 250, 300	Cast Iron body, Class 125, wafer type double disc check valve

### ABS TYPE APPROVED STRAINERS

Includes all Mueller Steam Specialty "Y" strainers, basket strainers, duplex strainers, check valves & rubber seated butterfly valves. See ABS web site for detail: [WWW.EAGLE.ORG/TYPEAPPROVAL/CONTENTS.HTML](http://WWW.EAGLE.ORG/TYPEAPPROVAL/CONTENTS.HTML)

### SPECIAL SPECIFICATIONS

ASTM F1199 Cast and Welded Pipeline Strainers - "Y" and basket strainers  
 ASTM F1200 Fabricated Strainers

### API

- Mueller Steam Specialty **Sure Check** Valves conform to API 594, API 598 & 6D.
- Mueller Steam Specialty **rubber seated butterfly valves** conform to API 609 and MSS SP 67.
- All Mueller Steam Specialty **standard butterfly valves** conform to MSS SP 25 and MSS SP 55.

### PED

- Mueller Steam Specialty has PED (Pressure Equipment Directive) approval for pipeline strainers and check valves.

All Strainers, Check Valves and Butterfly Valves can be modified to meet many customers special specifications or requirements. Consult factory for more information.

## SPECIAL APPROVALS - MILITARY SPECIFICATIONS

### "Y" STRAINERS

SPECIFICATION	MODEL	DESCRIPTION
Mil-S-002953C: Class A, B, D	582, 764/WE, 766M/WE, 862/BC, 864M	"Y" type, 3" & below, 600# & 1500# flanged, socket weld, or butt weld end connection, bolted cover
WW-S-2739: Type 1	11M	"Y" type, iron body, screwed, bronze blow off plug
WW-S-2739: Type 2	758	"Y" type, iron body, flanged, bronze blow off plug
Mil-S-21427A	764/WE, 766M/WE	"Y" type main steam line, drilled screen, X-Ray, magnaflux, 4" & above, 600# & 1500# flanged, socket weld, or butt weld end connection
Mil-B-24480	851M, 852	"Y" type, bronze or nickel aluminum bronze body material, sea water strainer
# 810-8441499 Rev J (NAVSHIPS)	352 1/2	"Y" type, bronze body, Silver brazing ends

### BASKET STRAINERS

SPECIFICATION	MODEL	DESCRIPTION
Mil-S-13789A	125F*	Basket strainer, iron body, flanged, large capacity, surge test, flanged to grooved nipples often required. The specification also describes 250# iron, 150#, 300# and 600# steel
Mil-B-24480	165, 125, 125F	Basket strainer, bronze or nickel aluminum bronze body, screwed or Flanged ends, Class 125 - 300, sea water strainer

### DUPLEX STRAINERS

SPECIFICATION	MODEL	DESCRIPTION
Mil-S-17849E	690/790 Series	Pipe Line Duplex Strainers, all models can meet this specification

### SILENT CHECK VALVES

SPECIFICATION	MODEL	DESCRIPTION
Mil-V-18436E	See Description	All Mueller Steam Specialty Silent Check Valves - consult factory

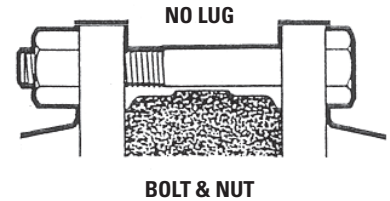
\* All Strainers, Check Valves and Butterfly Valves can be modified to meet many customers special specifications or requirements. Consult factory for more information.



## BUTTERFLY VALVE FLANGE BOLTING DATA

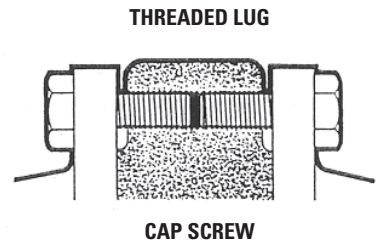
### WAFER: 51 & 87

BFV SIZE		ITEM	SIZE	LENGTH		QUANTITY
<i>in.</i>	<i>mm</i>			<i>in.</i>	<i>mm</i>	
2 & 2½	50 & 65	Bolt & Nut	⅝ - 11 UNC	4¼	114	4
3	80	Bolt & Nut	⅝ - 11 UNC	4¾	121	4
4	100	Bolt & Nut	⅝ - 11 UNC	5	127	8
5 & 6	125 & 150	Bolt & Nut	¾ - 10 UNC	5½	140	8
8	200	Bolt & Nut	¾ - 10 UNC	6	152	8
10	250	Bolt & Nut	⅞ - 9 UNC	6¾	171	12
12	300	Bolt & Nut	⅞ - 9 UNC	7	178	12
14	350	Bolt & Nut	1 - 8 UNC	8	203	12
16	400	Bolt & Nut	1 - 8 UNC	8½	216	16
18	450	Bolt & Nut	1½ - 7 UNC	9¼	235	16
20*	500	Cap Screw	1½ - 7 UNC	3	76	8
		Bolt & Nut	1½ - 7 UNC	10	254	16
24*	600	Bolt & Nut	1¼ - 7 UNC	11¾	298	16
		Cap Screw	1¼ - 7 UNC	3½	89	8



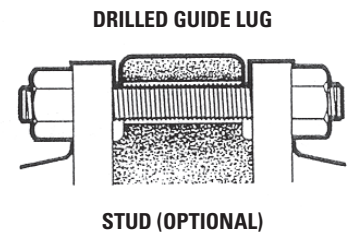
### FULL LUG: 52 & 88

BFV SIZE		ITEM	SIZE	LENGTH		QUANTITY
<i>in.</i>	<i>mm</i>			<i>in.</i>	<i>mm</i>	
2	50	Cap Screw	⅝ - 11 UNC	1¼	32	8
2½ & 3	65 & 80	Cap Screw	⅝ - 11 UNC	1½	38	8
4	100	Cap Screw	⅝ - 11 UNC	1½	38	16
5	125	Cap Screw	¾ - 10 UNC	1¾	44	16
6	150	Cap Screw	¾ - 10 UNC	2	51	16
8	200	Cap Screw	¾ - 10 UNC	2¼	57	16
10	250	Cap Screw	⅞ - 9 UNC	2½	64	24
12	300	Cap Screw	⅞ - 9 UNC	2½	64	24
14	350	Cap Screw	1 - 8 UNC	3	76	24
16	400	Cap Screw	1 - 8 UNC	3	76	32
18	450	Cap Screw	1½ - 7 UNC	3½	89	32
20	500	Cap Screw	1½ - 7 UNC	3½	89	40
24	600	Cap Screw	1¼ - 7 UNC	3¾	95	40



### SEMI LUG: 53

BFV SIZE		ITEM	SIZE	LENGTH		QUANTITY
<i>in.</i>	<i>mm</i>			<i>in.</i>	<i>mm</i>	
2	50	Cap Screw	⅝ - 11 UNC	1¼	32	8
2½ & 3	65 & 80	Cap Screw	⅝ - 11 UNC	1½	38	8
4	100	Cap Screw	⅝ - 11 UNC	1¾	44	8
		Bolt & Nut	⅝ - 11 UNC	5	127	4
5 & 6	125 & 150	Cap Screw	¾ - 10 UNC	1¾	44	8
		Bolt & Nut	¾ - 10 UNC	5½	140	4
8	200	Cap Screw	¾ - 10 UNC	2¼	57	8
		Bolt & Nut	¾ - 10 UNC	6	152	4
10	250	Cap Screw	⅞ - 9 UNC	2½	64	8
		Bolt & Nut	⅞ - 9 UNC	6¾	171	8
12	300	Cap Screw	⅞ - 9 UNC	2½	64	8
		Bolt & Nut	⅞ - 9 UNC	7	178	8



All thread sizes are UNC threads. All dimensions in inches.

Note: When using stud rod, add nut thickness plus ½" to length shown in table.

\* Model #51 guide lugs have a blind tapped hole on each side requiring cap screws.

## "Y" TYPE STRAINERS

Mueller Steam Specialty supplies customers world-wide with all of their requirements for "Y" Strainers. Whether the need is for a simple low pressure cast iron threaded strainer or a large, high pressure special alloy unit with a custom cap design, we have the "Y" strainers that fit the application.

We maintain a large stock of both standard and special sizes and materials. This stock includes end connections of threaded, flanged, socket weld, butt weld, solder, silbraze and grooved ends. We also have units with screwed caps, bolted caps, hinge type covers and swing type clamp covers.

Pressure is not a problem for Mueller Steam Specialty. "Y" strainers are available for pressures from ANSI Class 125 through Class 2500 and higher.

All of these strainers are available in a wide variety of materials. Units are maintained in stock with standard materials such as:

- Cast Iron
- 316 SS
- Monel
- Bronze
- 304 SS
- Ductile Iron
- 316L SS
- Hastelloy
- Carbon Steel
- Alloy 20

### MODEL 11M

#### CLASS 250

Cast Iron – NPT Ends, Screwed Cap

- Size: 1/4" - 4" (8 - 100mm)
- 250psi WSP @ 400°F
- 17 bar @ 204°C
- 400psi WOG @ 150°F
- 27 bar @ 65°C



### MODEL 352 1/2

#### CLASS 250

Bronze – Silbraze Ends, Screwed Cap

- Size: 1/4" - 4" (8 - 100mm)
- 250psi WSP @ 425°F
- 17 bar @ 218°C



### MODEL 353 1/2

#### CLASS 125

Bronze – Solder Ends, Gasket Cover

- Size: 1/4" - 4" (8 - 100mm)
- 175psi WOG @ 250°F
- 12 bar @ 121°C

### MODEL 358S

#### CLASS 125

Bronze – Solder Ends, Screwed Cap

- Size: 1/4" - 3" (8 - 80mm)
- 175psi WOG @ 250°F
- 12 bar @ 121°C

### MODEL 758

#### CLASS 125

Cast Iron – Flanged Ends, Bolted Flange Cover

- Size: 3/4"-24" (20 - 600mm)
 

to 12"	125psi WSP @ 450°F
(to 300mm)	8 bar @ 232°C
	200psi WOG @ 150°F
	13 bar @ 65°C
- 14"-24" (350 - 600mm)
 

100psi WSP @ 353°F
7 bar @ 178°C
150psi WOG @ 150°F
10 bar @ 65°C



### MODEL 351M

#### CLASS 125

Bronze – NPT, Screwed Cap

- Size: 1/4" - 3" (8 - 80mm)
- 150psi WSP @ 350°F
- 10 @ 176°C
- 200psi WOG @ 150°F
- 13 bar @ 65°C



### MODEL 352M

#### CLASS 250

Bronze – NPT, Screwed Cap

- Size 1/4" - 4" (8 - 100mm)
- 300psi WSP @ 350°F
- 20 bar @ 176°C
- 400psi WOG @ 150°F
- 27 bar @ 65°C

### MODEL 752

#### CLASS 250

Cast Iron – Flanged Ends, Bolted Flange Cover

- Size: 1/2" - 24" (15 - 600mm)
 

to 12"	250psi WSP @ 450°F
(to 300mm)	17 bar @ 232°C
	500psi WOG @ 150°F
	34 bar @ 65°C
- 14"-24" (350 - 600mm)
 

200psi WSP @ 406°F
13 bar @ 208°C
300psi WOG @ 150°F
20 bar @ 65°C

### Our Screens & Baskets are Designed to Achieve Maximum Straining Efficiency

The most critical aspect to any strainer is straining efficiency and durability. Mueller Steam Specialty's many years of experience and continuous improvements provide the highest quality. We carry a larger inventory of perforated metals and meshes than any other strainer manufacturer in the world. Besides standard metals, we carry thousands of variations of materials and openings. Openings range from 1" to 5 microns.

**Note:** Retainer caps/covers shown are for illustration purposes only. They do not necessarily reflect actual product shipped.



## "Y" TYPE STRAINERS

### MODEL 781

#### MODEL 781-SS\*

##### CLASS 150

Cast Steel/Stainless Steel – Flanged Ends, Bolted Flange Cover

- Size: ½" - 24" (15 - 600mm)
- 150psi WSP @ 565°F
- 10 bar @ 296°C
- 285psi WOG @ 100°F
- 19 bar @ 38°C



### MODEL 782

#### MODEL 782-SS\*

##### CLASS 300

Cast Steel/Stainless Steel – Flanged Ends, Bolted Flange Cover

- Size: ½" - 20" (15 - 500mm)
- 300psi WSP @ 838°F
- 20 bar @ 448°C
- 740psi WOG @ 100°F
- 51 bar @ 38°C

### MODEL 764/764-SS\*

#### CLASS 600

Cast Steel/Stainless Steel – Flanged Ends, Bolted Flange Cover

- Size: ½" - 20" (15 - 500mm)
- 600psi WSP @ 838°F
- 41 bar @ 448°C
- 1480psi WOG @ 100°F
- 102 bar @ 38°C

### MODEL 781-WE

#### MODEL 781-SS-WE\*

##### CLASS 150

Cast Steel/Stainless Steel  
Butt Weld Ends, Bolted Flange Cover

- Size: ½" - 24" (15 - 600mm)
- 150psi WSP @ 565°F
- 10 bar @ 296°C
- 285psi WOG @ 100°F
- 19 bar @ 38°C



### MODEL 782-WE

#### MODEL 782-SS-WE\*

##### CLASS 300

Cast Steel/Stainless Steel  
Butt Weld Ends, Bolted Flange Cover

- Size: ½" - 24" (15 - 600mm)
- 300psi WSP @ 838°F\*
- 20 bar @ 448°C
- 740psi WOG @ 100°F
- 51 bar @ 38°C

### MODEL 764-WE

#### MODEL 764-SS-WE\*

##### CLASS 600

Cast Steel/Stainless Steel  
Butt Weld Ends, Bolted Flange Cover

- Size: ½" - 16" (15 - 400mm)
- 600psi WSP @ 838°F
- 41 bar @ 448°C\*
- 1480psi WOG @ 100°F
- 102 bar @ 38°C

### MODEL 765M

#### MODEL 765M-SS\*

##### CLASS 900

Cast Steel/Stainless Steel – Flanged Ends, Bolted Flange Cover

- Size: ½" - 10" (15 - 250mm)
- 900psi WSP @ 838°F
- 62 bar @ 448°C\*
- 2200psi WOG @ 100°F
- 151 bar @ 38°C



### MODEL 766M

#### MODEL 766M-SS\*

##### CLASS 1500

Cast Steel/Stainless Steel – Flanged Ends, Bolted Flange Cover

- Size: ½" - 12" (15 - 300mm)
- 1500psi WSP @ 838°F
- 103 bar @ 448°C
- 3705psi WOG @ 100°F
- 255 bar @ 38°C

### MODEL 767/767-SS\*

#### CLASS 2500

Cast Steel/Stainless Steel – Flanged Ends, Bolted Flange Cover

- Size: ½" - 12" (15 - 300mm)
- 2500psi WSP @ 838°F
- 172 bar @ 448°C
- 6170psi WOG @ 100°F
- 425 bar @ 38°C

### MODEL 851M

#### CLASS 150

Bronze – Flanged Ends, Bolted Flange Cover

- Size: ½" - 12" (15 - 300mm)
- 150psi WSP @ 406°F
- 10 bar @ 208°C
- 225psi WOG @ 150°F
- 15 bar @ 65°C



### MODEL 852

#### CLASS 300

Bronze – Flanged Ends, Bolted Flange Cover

- Size: ½" - 12" (15 - 300mm)
- 350psi WSP @ 350°F
- 24 bar @ 176°C
- 500psi WOG @ 150°F
- 34 bar @ 65°C

#### \* Pressure-Temperature Rating for Stainless Steel Models only

Consult factory for Carbon Steel. Optional sizes, materials, baskets, gaskets and mesh liners are available on application.

Mueller Steam Specialty "Y" strainers have generously proportioned bodies with screens that have an open area many times greater than the corresponding pipe size to ensure low pressure loss. All strainers are hydrostatically tested in accordance with applicable ANSI, API and MSS standards.

## "Y" TYPE STRAINERS

### MODEL 765M-WE MODEL 765M-SS-WE\*

#### CLASS 900

Cast Steel/Stainless Steel, Butt Weld Ends,  
Bolted Flange Cover

- Size: ½" - 14" (15 - 350mm)
- 900psi WSP @ 838°F
- 62 bar @ 448°C
- 2220psi WOG @ 100°F
- 153 bar @ 38°C



### MODEL 766M-WE MODEL 766M-SS-WE\*

#### CLASS 1500

Cast Steel/Stainless Steel, Butt Weld Ends,  
Bolted Flange Cover

- Size: ½" - 16" (15 - 400mm)
- 1500psi WSP @ 838°F
- 103 bar @ 448°C
- 3705psi WOG @ 100°F
- 255 bar @ 38°C

### MODEL 767-WE MODEL 767-SS-WE\*

#### CLASS 2500

Cast Steel/Stainless Steel, Butt Weld Ends,  
Bolted Flange Cover

- Size: ½" - 16" (15 - 400mm)
- 2500psi WSP @ 838°F
- 172 bar @ 448°C
- 6170psi WOG @ 100°F
- 425 bar @ 38°C

### MODEL 861-BC MODEL 861-SS-BC\*

#### CLASS 600

Cast Steel/Stainless Steel, NPT Ends  
Bolted Flange Cover

- Size: ¼" - 2" (8 - 50mm)



### MODEL 862-BC MODEL 862-SS-BC\*

Cast Steel/Stainless Steel,  
Socket Weld Ends, Bolted Flange Cover

- Size: ½" - 3" (15 - 80mm)
- 600psi WSP @ 838°F
- 41 bar @ 448°C
- 1480psi WOG @ 100°F
- 102 bar @ 38°C

### MODEL 581/581-SS\* MODEL 861/861-SS\*

#### CLASS 600

Cast Steel/Stainless Steel, NPT Ends & Cap

- Size: ½" - 2" (15 - 50mm)

### MODEL 582/582-SS\* MODEL 862/862-SS\*

#### CLASS 600

Cast Steel/Stainless Steel, NPT Ends & Screwed Cap

- Size: ¼" - 2" (8 - 50mm)
- 600psi WSP @ 838°F
- 41 bar @ 448°C
- 1480psi WOG @ 100°F
- 102 bar @ 38°C



### MODEL 863M MODEL 863M-SS\*

#### CLASS 1500

Cast Steel/Stainless Steel, NPT Ends, Screwed Cap

- Size: ½" - 2" (15 - 50mm)
- 1¼", 1½" & 2" (32, 40 & 50mm) have Bolted Cap

### MODEL 864M MODEL 864M-SS\*

#### CLASS 1500

Socket Weld Ends, Screwed Caps

- Size: 1¼" - 2" (32 - 50mm)
- 1¼", 1½" & 2" (32, 40, 50mm) have Bolted Cap
- 1500psi WSP @ 838°F
- 103 bar @ 448°C
- 3705psi WOG @ 100°F
- 255 bar @ 38°C



### MODEL 865 MODEL 865-SS\*

Cast Steel/Stainless Steel,  
NPT Ends, Bolted Flange Cover

#### CLASS 2500

- Size: ½" - 2" (15 - 50mm)



### MODEL 866 MODEL 866-SS\*

Cast Stainless Steel,  
Socket Weld Ends, Bolted Flange Cover

- Size: ½" - 2" (15 - 50mm)
- 2500psi WSP @ 838°F
- 172 bar @ 448°C
- 6170psi WOG @ 100°F
- 425 bar @ 38°C

#### \* Pressure-Temperature Rating for Stainless Steel Models only

Consult factory for Carbon Steel. Optional sizes, materials, baskets, gaskets and mesh liners are available on application.

Mueller Steam Specialty "Y" strainers have generously proportioned bodies with screens that have an open area many times greater than the corresponding pipe size to insure low pressure loss. All strainers are hydrostatically tested in accordance with applicable ANSI, API and MSS standards.



## DUPLEX STRAINERS

Many times, critical systems cannot be shut down for strainer basket cleaning. These systems include cooling water, compressors, condensers, fire lines, fuel lines, chemical process systems, pump suction applications and other similar services. For these applications, the Mueller Steam Specialty Duplex Strainer is the perfect choice.

For sizes 3/4" through 6", the Revolutionary Ball-Plex™ duplex strainer from Mueller Steam Specialty has all of the features you need. Bubble tight seating, true in-line maintainability, extremely easy seat replacement and long, trouble-free service life in a very simple and rugged design.

Available from stock in cast iron, bronze, carbon steel and stainless steel. Other alloys are also available.

All of the Ball-Plex™ units are standard with 316 SS balls and PTFE seats. Other alloys are also available for the balls.

Threaded and flanged units are available with full rated pressures from Class 125 to Class 300 (Class 600 flanges also available). With the floating ball design and relatively low torque requirements, it is very easy to automate these units for remote operation.

### MUELLER STEAM SPECIALTY'S REVOLUTIONARY BALL-PLEX™ STRAINER



3/4" - 6" (20 - 150mm)

#### MODEL 791-SAH

##### CLASS 125

- Cast Iron  
NPT Ends, Knob Type Cover 316 SS Balls,
- Size: 3/4" - 3" (20 - 80mm)
  - 200psi WOG @ 150°F
  - 13 bar @ 65°C

#### MODEL 792-SBH

##### CLASS 150

- Bronze
- Size: 3/4" - 3" (20 - 80mm)

#### MODEL 792-SDH\*

##### CLASS 150

- Carbon Steel
- Size: 3/4" - 3" (20 - 80mm)
  - 285psi WOG @ 100°F
  - 19 bar @ 38°C

#### MODEL 792-SHH

##### CLASS 150

- Stainless Steel
- Size: 3/4" - 3" (20 - 80mm)

#### MODEL 791-FAH

##### CLASS 125

- Cast Iron  
Flanged Ends, Knob Type Cover 316 SS Balls
- Size: 1" - 6" (25 - 150mm)
  - 200psi WOG @ 150°F
  - 13 bar @ 65°C

#### MODEL 794-SBH

##### CLASS 300

- Bronze
- Size: 3/4" - 3" (20 - 80mm)

#### MODEL 794-SDH\*

##### CLASS 300

- Carbon Steel
- Size: 3/4" - 3" (20 - 80mm)
  - 740psi WOG @ 100°F
  - 51 bar @ 38°C

#### MODEL 794-SHH

##### CLASS 300

- Stainless Steel
- Size: 3/4" - 3" (20 - 80mm)

#### MODEL 796-SDH\*

##### CLASS 600

- Carbon Steel
- Size: 3/4" - 3" (20 - 80mm)
  - 740psi WOG @ 100°F
  - 51 bar @ 38°C

#### MODEL 796-SHH

##### CLASS 600

- Stainless Steel
- Size: 3/4" - 3" (20 - 80mm)

#### MODEL 792-FBH

##### CLASS 150

- Bronze
- Size 1"-6" (25 - 150mm)

#### MODEL 792-FDH\*

##### CLASS 150

- Carbon Steel
- Size 1"-6" (25 - 150mm)
  - 285psi WOG @ 100°F
  - 19 bar @ 38°C

#### MODEL 792-FHH

##### CLASS 150

- Stainless Steel
- Size 1"-6" (25 - 150mm)

#### MODEL 794-FBH

##### CLASS 300

- Bronze
- Size 1"-6" (25 - 150mm)

#### MODEL 794-FDH\*

##### CLASS 300

- Carbon Steel
- Size 1"-6" (25 - 150mm)
  - 740psi WOG @ 100°F
  - 51 bar @ 38°C

#### MODEL 794-FHH

##### CLASS 300

- Stainless Steel
- Size 1"-6" (25 - 150mm)

#### MODEL 796-FDH\*

##### CLASS 600

- Carbon Steel
- Size: 1" - 6" (25 - 150mm)
  - 740psi WOG @ 100°F
  - 51 bar @ 38°C

#### MODEL 796-FHH\*

##### CLASS 600

- Stainless Steel
- Size: 1" - 6" (25 - 150mm)

#### \* Pressure-Temperature Rating for Stainless Steel Models only

Consult factory for Carbon Steel. Optional sizes, materials, baskets, gaskets and mesh liners are available on application.

## DUPLEX STRAINERS - 8" - 24" (200 - 600mm)

For sizes from 8" - 24" (200 - 600mm), the larger Mueller Steam Specialty duplex strainer is the unit of choice. Using an in-line plug design, quick flow transfer is accomplished with less than a 90° rotation of the handle. Economical actuation of the unit is also available.

Sizes 8" - 16" (200 - 400mm) are available in cast iron, bronze, carbon steel and stainless steel and Class 125 and 150.

Sizes 18" - 24" (450 - 600mm) are fabricated. All units can be supplied with special materials, baskets and coatings.

### 8" - 24" DUPLEX STRAINERS

#### MODEL 691 MFA

##### CLASS 125

**Body:** Cast Iron  
Flanged Ends, Bolted or Clamped Flange Cover

- Size: 8" - 16" (200 - 400mm)
- 150psi @ 150°F
- 10 bar @ 65°C



#### MODEL 692 MF

##### CLASS 150

**Body:** Bronze, Carbon Steel, Stainless Steel  
Flanged Ends, Bolted or Clamped Flange Cover

##### CLAMP COVER

- Size: 8" - 16" (200 - 400mm)
- 150psi WOG @ 100°F\*
- 10 bar @ 38°C\*

##### BOLTED COVER

- Size: 8" - 16" (200 - 400mm)
- 200psi WOG @ 100°F\*
- 13 bar @ 38°C\*
- Size 14" - 16" (350 - 400mm)
- 150psi WOG @ 100°F\*
- 10 bar @ 38°C\*

### HOW TO ORDER

Mueller Steam Specialty **Ball-Plex™** Duplex Strainer basic model numbers are based on ANSI Class connections as follows:

- 791 for Class 125
- 792 for Class 150
- 794 for Class 300
- 796 for Class 600

For Marine and other larger styles:

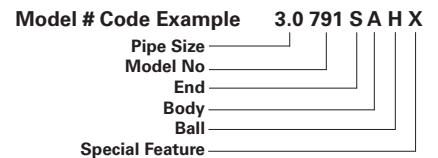
690 for 50psi (marine duplex with Class 125 flanges)

- 691 for Class 125
- 692 for Class 150

### EXAMPLE

Three inch Model 791S-AH (see above) with some special feature such as special baskets, blow-off connections, special O-rings, etc.

This is a Class 125 duplex strainer with NPT Ends, cast iron body and covers, stainless steel balls. The ordering and tagging number is written as follows:



Consult factory for all special features. If no special features are required use "O" in place of "X" in the ordering and tagging number.

	MATERIAL	CODE
<b>End</b>	Flanged	F
	NPT	S
<b>Body</b>	Cast Iron	A
	Bronze	B
	Carbon Steel	D
	Stainless Steel	H
<b>Ball</b>	Monel	Q
	Bronze	B
	Stainless Steel	H

#### \* Pressure-Temperature Rating for Stainless Steel Models only

Consult factory for Carbon Steel. Optional sizes, materials, baskets, gaskets and mesh liners are available on application.

## SPECIAL STRAINERS

### FIRELINE STRAINERS

U.L. approved strainers for fireline service are designed specifically for applications such as automatic water sprinklers and spray systems in firelines. The very large open area ratio helps prevent problems due to clogging of the screen. These units are available with open areas up to seven times the corresponding pipe size. This exceeds the AWWA requirements by almost 200%.

Whether the need is for a "Y" strainer or a basket strainer, Mueller cast iron fireline strainers from 2½" to 12" can meet your needs.

#### MODEL 595 CLASS 125

Cast Iron  
Flanged Ends,  
U.L. Approved for Fireline Service

- Size: 4" - 12" (100 - 300mm)
- 175psi WOG @ 150°F
- 12 bar @ 65°C



#### MODEL 911U CLASS 125

Cast Iron  
Flanged Ends  
U.L. Approved for Fireline Service

- Size: 2½" - 12" (65 - 300mm)
- 175psi WOG @ 150°F
- 12 bar @ 65°C



### METER STRAINERS

When expensive displacement water meters and other sensitive fluid monitoring devices need to be protected from damage due to particles and debris in the line and space is a problem, the Mueller Steam Specialty meter strainers are the solution.

These units have been designed to meet AWWA requirements of a straining area at least twice the size of the main meter case inlet of turbine type meters.

Available in cast iron and bronze from 1½" to 8", these units are designed to eliminate your meter protection problems.

#### MODEL 625 CLASS 125

Cast Iron  
Flanged Ends, Bolted Cover,

- Size: 3" - 8" (80 - 200mm)
- 175psi WOG @ 150°F
- 12 bar @ 65°C



#### MODEL 625-B CLASS 150

Bronze  
Flanged Ends, Bolted Cover

- Size: 1½" - 8" (40 - 200mm)
- 175psi WOG @ 150°F
- 12 bar @ 65°C



### FABRICATED STRAINERS

Mueller Steam Specialty has a long history of providing the highest quality, economical fabricated strainers to meet every need.

Whether the requirement is for a basket strainer, large "Y" strainer, "Tee" type strainer, temporary strainer or large duplex strainer, Mueller will custom engineer and fabricate the exact strainer required.

Some of the special features available include:

- Special Dimensions
- Special Baskets
- Special Covers (Lifting Davits, Quick Opening etc.)
- Special End Connections
- Special Corrosion Allowances
- Special Draining and Cleaning
- Special Certifications:

**ASME code stamped, etc.**

#### MODEL 781 FAB CLASS 150

Carbon Steel, Stainless Steel, and other Alloys,  
Flanged Ends

- Size: 4" - 36" (100 - 900mm)



#### MODEL 782 FAB CLASS 300

Carbon Steel, Stainless Steel, and other Alloys,  
Flanged Ends

- Size: 4" - 24" (100 - 600mm)

#### MODEL 784 FAB CLASS 600

Carbon Steel, Stainless Steel, and other Alloys,  
Flanged Ends

- Size: 4" - 24" (100 - 600mm)

#### MODEL 781 WE-FAB CLASS 150

Carbon Steel, Stainless Steel, and other Alloys,  
Weld Ends

- Size: 4" - 36" (100 - 900mm)

#### MODEL 782 WE-FAB CLASS 300

Carbon Steel, Stainless Steel, and other Alloys,  
Weld Ends

- Size: 4" - 24" (100 - 600mm)

#### MODEL 784 WE-FAB CLASS 600

Carbon Steel, Stainless Steel, and other Alloys,  
Weld Ends

- Size: 4" - 24" (100 - 600mm)

**Class 900 and higher available**

## FABRICATED STRAINERS

### MODEL 22 BASKET TYPE

Carbon Steel, Stainless Steel and other Alloys

- Size: ¾" - 60" (20 - 1500mm)



### MODEL 23 CONICAL TYPE

Carbon Steel, Stainless Steel and other Alloys

- Size: ¾" - 60" (20 - 1500mm)

### MODEL 24 PLATE TYPE

• Carbon Steel, Stainless Steel and other Alloys

- Size: ¾" - 60" (20 - 1500mm)

### MODEL 185 FAB-B CLASS 150

Carbon Steel, Stainless Steel, and other Alloys

Bolted Cover

- Size: 4" - 54" (100 - 1350mm)



### MODEL 186 FAB-B CLASS 300

Carbon Steel, Stainless Steel, and other Alloys

Bolted Cover

- Size: 4" - 48" (100 - 1200mm)

### MODEL 188 FAB-B CLASS 600

Carbon Steel, Stainless Steel, and other Alloys

Bolted Cover

- Size: 4" - 36" (100 - 900mm)

### MODEL 185 FAB-Q CLASS 150

Carbon Steel, Stainless Steel, and other Alloys

Quick Opening Cover

- Size: 4" - 36" (100 - 900mm)

### MODEL 41 T-B CLASS 150

Carbon Steel, Stainless Steel, and other Alloys

Bolted Cover

- Size: 2" - 36" (50 - 900mm)



### MODEL 42 T-B CLASS 300

Carbon Steel, Stainless Steel, and other Alloys

Bolted Cover

- Size: 2" - 36" (50 - 900mm)

### MODEL 44 T-B CLASS 600

Carbon Steel, Stainless Steel, and other Alloys

Bolted Cover

- Size: 2" - 36" (50 - 900mm)

### MODEL 46 T-B CLASS 900

Carbon Steel, Stainless Steel, and other Alloys

Bolted Cover

- Size: 2" - 36" (50 - 900mm)

### MODEL 48 T-B CLASS 1500

Carbon Steel, Stainless Steel, and other Alloys

Bolted Cover

- Size: 2" - 36" (50 - 900mm)

### MODEL 41 T-Q CLASS 150

Carbon Steel, Stainless Steel, and other Alloys

Quick Opening Cover

- Size: 2" - 36" (50 - 900mm)

#### Mueller Steam Specialty

has a long history of providing the highest quality, economical fabricated strainers to meet every need. From Class 150 to Class 2500, we produce steel and alloy fabricated strainers to your exact requirements.

## QUICK ACTING STRAINERS

### MODEL 15A

#### CLASS 150

**Available Body Material:**

Carbon Steel, Stainless Steel, and other Alloys, Butt Weld

- Size: 1" - 48" (25 - 1200mm)



### MODEL 15AF

#### CLASS 150

**Available Body Material:**

Carbon Steel, Stainless Steel, and other Alloys  
Flanged Ends

- Size: 1" - 48" (25 - 1200mm)

### MODEL 60A

#### CLASS 600

**Available Body Material:**

Carbon Steel, Stainless Steel, and other Alloys  
Butt Weld

- Size: 1" - 48" (25 - 1200mm)

### MODEL 60AF

#### CLASS 600

**Available Body Material:**

Carbon Steel, Stainless Steel, and other Alloys  
Flanged Ends

- Size: 1" - 48" (25 - 1200mm)

### MODEL 150A

#### CLASS 1500

**Available Body Material:**

Carbon Steel, Stainless Steel, and other Alloys  
Butt Weld

- Size: 1" - 48" (25 - 1200mm)

### MODEL 150AF

#### CLASS 1500

**Available Body Material:**

Carbon Steel, Stainless Steel, and other Alloys  
Flanged Ends

- Size: 1" - 48" (25 - 1200mm)

### MODEL 30A

#### CLASS 300

**Available Body Material:**

Carbon Steel, Stainless Steel, and other Alloys  
Butt Weld

- Size: 1" - 48" (25 - 1200mm)

### MODEL 30AF

#### CLASS 300

**Available Body Material:**

Carbon Steel, Stainless Steel, and other Alloys  
Flanged Ends

- Size: 1" - 48" (25 - 1200mm)

### MODEL 90A

#### CLASS 900

**Available Body Material:**

Carbon Steel, Stainless Steel, and other Alloys  
Butt Weld

- Size: 1" - 48" (25 - 1200mm)

### MODEL 90AF

#### CLASS 900

**Available Body Material:**

Carbon Steel, Stainless Steel, and other Alloys  
Flanged Ends

- Size: 1" - 48" (25 - 1200mm)

### MODEL 250A

#### CLASS 2500

**Available Body Material:**

Carbon Steel, Stainless Steel, and other Alloys  
Butt Weld

- Size: 1" - 48" (25 - 1200mm)

### MODEL 250AF

#### CLASS 2500

**Available Body Material:**

Carbon Steel, Stainless Steel, and other Alloys  
Flanged Ends

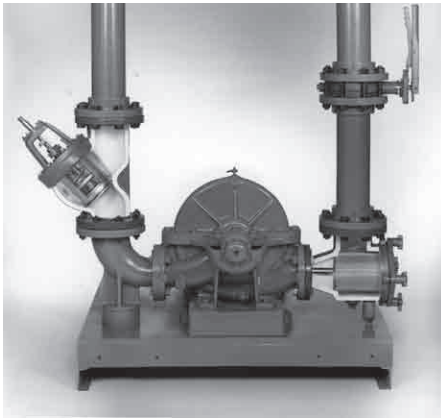
- Size: 1" - 48" (25 - 1200mm)

### Trust Mueller Steam Specialty

strainers & valves to handle the most demanding needs of the marine industry. We have a vast knowledge of product/service compatibility combined with an endless array of materials, sizes, pressures and end connections to meet your application requirements.



## PUMP PROTECTION



Mueller Steam Specialty Control-Chek Combination Valve and Suction Diffuser.

The Mueller Steam Specialty Pump Protection Package is a compact, effective and economical way to simplify the maze of piping found in most pump locations.

Our Control-Chek® valve has been specifically designed to incorporate balancing, shut off and check valve functions into one compact, easily installed unit. This saves space, installation cost and maintenance time.

The Suction Diffuser does more than just strain out particles that could damage your pump. By replacing the elbow, strainer and entry pipe on the suction side of the pump, a tremendous savings in space, equipment and labor will be realized. Our Control-Chek® and Suction Diffuser, together with an inlet control valve, can replace up to six costly, space-robbing pipe components. That does not include the savings due to fewer welds, hangers, flanges, ease of maintenance and improved access in the mechanical room. Both units are also available in our LOCXEND® line (See page 27).

Contact us for more information on these products.

### MODEL 721

#### CLASS 125

Cast Iron Control-Chek®, Flanged Ends, Bolted Yoke Cover with Position Indicator

- Size: 2" - 14" (50 - 350mm)
 

2"-12" (50 - 300mm)	200psi WOG @ 150°F 13 bar @ 65°C
14" (350mm)	150psi WOG @ 150°F 10 bar @ 65°C



### MODEL 722

#### MODEL 722G (LOCXEND®)

#### CLASS 300

Ductile Iron Control-Chek®

- Size: 2" - 12"
 

2"-10" (50 - 250mm)	640psi WOG @ 100°F 44 bar @ 38°C
12" (300mm)	500psi WOG @ 100°F 34 bar @ 38°C

### MODEL 1011

#### CLASS 125

Cast Iron Flanged Ends, Knob Cover through 8" x 8"  
Bolted Available through 18" x 18"

- Size: 2" x 1¼" - 12" x 12"  
(50 x 32mm - 300 x 300mm)  
200psi WOG @ 150°F  
13 bar @ 65°C



Consult factory for temperature & pressure data for bolted cover, larger sizes.

### MODEL 1012

#### CLASS 300

Ductile Iron Flanged Ends, Knob Cover through 8" x 8"  
Bolted Available through 18" x 18"

- Size: 2" x 1¼" - 12" x 12"  
(50 x 32mm - 300 x 300mm)  
300psi WOG @ 100°F  
20 bar @ 38°C

Consult factory for temperature & pressure data for bolted cover, larger sizes.

### MODEL 1011G (LOCXEND®)

#### CLASS 300

Ductile Iron, Knob Cover through 8" x 8",  
Bolted Available through 14" x 14"  
Ends: Grooved Inlet - Flanged Outlet

- Size: 2" x 1¼" - 12" x 12"  
(50 x 32mm - 300 x 300mm)  
300psi WOG @ 100°F  
20 bar @ 38°C

Consult factory for temperature & pressure data for bolted cover, larger sizes.

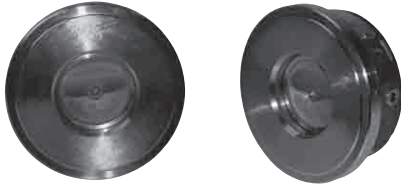
## CHEXTER® CHECK VALVE

The CHEXTER® Check Valves are designed to be used economically in a variety of commercial and industrial applications - including commercial construction, industrial, marine, utilities and process industries.

CHEXTER® Check valves meet the requirements of, and are approved for use by:

- General Services Administration
- U.S. Navy, the U.S. Coast Guard, U.S. Air Force and NASA
- Utility industry requirements for performance-Water, gas and compressed air lines

The CHEXTER® Check valve may be outfitted in a broad combination of metal trims allowing quick selection of the right valve for your application.



### MODEL 1600-D

#### CLASS 125

Cast Iron body/Buna-N Seal

Facing: Flat Face Flange

- Size: 2" - 36" (50 - 900mm)
 

2" - 12"	200psi WOG @150°F
50 - 300mm	14 bar @ 66°C
14" - 24"	150psi WOG@150°F
350 - 600mm	10 bar @ 66°C
30" & Up	150psi WOG @ 150°F
900mm	10 bar @ 66°C

### MODEL 1600-DE

#### CLASS 125

Cast Iron body/Buna-N Seal

Facing: Flat Face Flange

- Size: 2"-36" (50 - 900mm)
 

2" - 12"	200psi WOG @150°F
50 - 300mm	14 bar @ 66°C
14" - 24"	150psi WOG@150°F
350 - 600mm	10 bar @ 66°C
30" & Up	150psi WOG @ 150°F
900mm	10 bar @ 66°C

### MODEL 1602-D

#### CLASS 250

Cast Iron body/Buna-N Seal

Facing: Raised Flange

- Size: 2" - 30" (50 - 760mm)
 

2" - 12"	500psi WOG @150°F
50 - 300mm	34 bar @ 66°C
14" - 24"	300psi WOG@150°F
350 - 600mm	21 bar @ 66°C
30"	300psi WOG @ 150°F
900mm	21 bar @ 66°C

### MODEL 1602-DE

#### CLASS 250

Cast Iron body/Buna-N Seal

Facing: Raised Flange

- Size: 2" - 24" (50 - 600mm)
 

2" - 12"	500psi WOG @150°F
50 - 300mm	34 bar @ 66°C
14" - 24"	300psi WOG@150°F
350 - 600mm	21 bar @ 66°C

### MODEL 1601-A

#### CLASS 150

Carbon Steel body/Buna-N Seal

Facing: Raised Flange

- Size: 2" - 30" (50 - 750mm)
- 285psi WOG @ 100°F
- 20 bar @ 38°C

### MODEL 1601-AC

#### CLASS 150

Carbon Steel body/Teflon seal

Facing: Raised Flange

- Size: 2" - 30" (50 - 750mm)
- 285psi WOG @ 100°F
- 20 bar @ 38°C

### MODEL 1601-AF

#### CLASS 150

Carbon steel body/Metal-to-metal seal

Facing: Raised Flange

- Size: 2" - 30" (50 - 750mm)
- 285psi WOG @ 100°F
- 20 bar @ 38°C

### MODEL 1601-C

#### CLASS 150

316 SS body/Teflon seal

Facing: Raised Flange

- Size: 2" - 12" (50 - 300mm)
- 275psi WOG @ 100°F
- 19 bar @ 38°C

### MODEL 1601-E

#### CLASS 150

Aluminum bronze body/Teflon seal

Facing: Raised Flange

- Size: 2" - 12" (50 - 300mm)
- 195psi WOG @ 100°F
- 13 bar @ 38°C

## CHEXTER® CHECK VALVE

### MODEL 1603-A

#### CLASS 300

- Carbon steel body/Buna-N seal  
Facing: Raised Flange
- Size: 2" - 24" (50 - 600mm)
  - 740psi WOG @ 100°F
  - 51 bar @ 38°C

### MODEL 1603-AC

#### CLASS 300

- Carbon steel body/Teflon seal  
Facing: Raised Flange
- Size: 2" - 24" (50 - 600mm)
  - 740psi WOG @ 100°F
  - 51 bar @ 38°C

### MODEL 1603-AF

#### CLASS 300

- Carbon steel body/Metal-to-metal seal  
Facing: Raised Flange
- Size: 2" - 24" (50 - 600mm)
  - 740psi WOG @ 100°F
  - 51 bar @ 38°C

### MODEL 1603-C

#### CLASS 300

- 316 SS body/Teflon seal  
Facing: Raised Flange
- Size: 2" - 12" (50 - 300mm)
  - 720psi WOG @ 100°F
  - 50 bar @ 38°C

### MODEL 1603-E

#### CLASS 300

- Aluminum Bronze body/Teflon seal  
Facing: Raised Flange
- Size: 2" - 12" (50 - 300mm)
  - 515psi WOG @ 100°F
  - 36 bar @ 38°C

### MODEL 1604-A

#### CLASS 400

- Carbon Steel body/Buna-N seal  
Facing: Raised Flange
- Size: 2" - 24" (50 - 600mm)
  - 990psi WOG @ 100°F
  - 68 bar @ 38°C

### MODEL 1605-A

#### CLASS 600

- Carbon steel body/Buna-N seal  
Facing: Raised Flange
- Size: 2" - 24" (50 - 600mm)
  - 1480psi WOG @ 100°F
  - 102 bar @ 38°C

### MODEL 1605-AC

#### CLASS 600

- Carbon steel body/Teflon seal  
Facing: Raised Flange
- Size: 2" - 24" (50 - 600mm)
  - 1480psi WOG @ 100°F
  - 102 bar @ 38°C

### MODEL 1605-AF

#### CLASS 600

- Carbon steel body/Metal-to-Metal seal  
Facing: Raised Flange
- Size: 2" - 24" (50 - 600mm)
  - 1480psi WOG @ 100°F
  - 102 bar @ 38°C

### MODEL 1605-C

#### CLASS 600

- 316 SS body/Teflon seal  
Facing: Raised Flange
- Size: 2" - 12" (50 - 300mm)
  - 1480psi WOG @ 100°F
  - 99 bar @ 38°C

### MODEL 1606-A

#### CLASS 900

- Carbon steel body/Buna-N seal  
Facing: Raised Flange
- Size: 2" - 12" (50 - 300mm)
  - 2120psi WOG @ 100°F
  - 146 bar @ 38°C

### MODEL 1606-AC

#### CLASS 900

- Carbon steel body/Teflon seal  
Facing: Raised Flange
- Size: 2" - 12" (50 - 300mm)
  - 2120psi WOG @ 100°F
  - 146 bar @ 38°C

### MODEL 1606-AF

#### CLASS 900

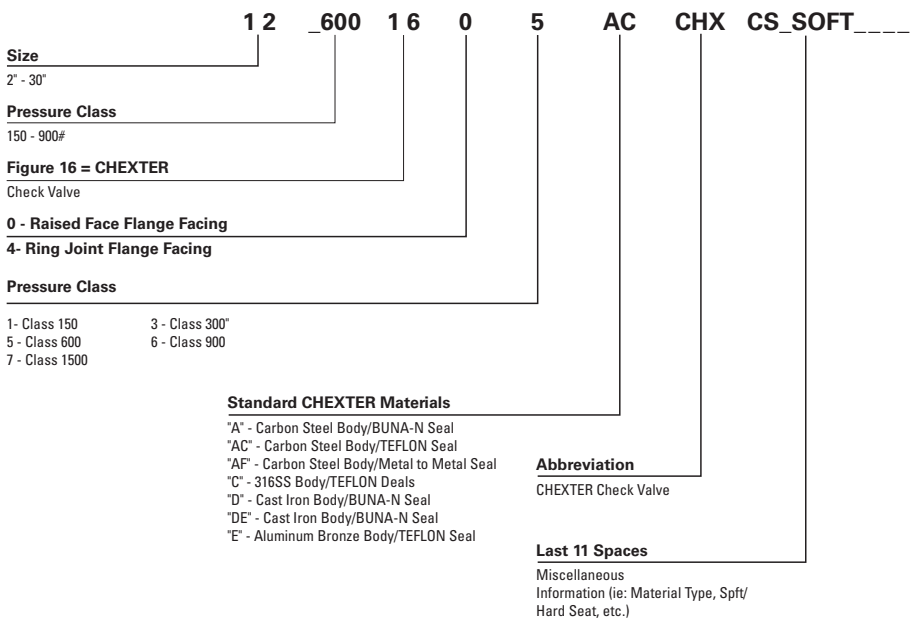
- Carbon steel body/Metal-to-metal seal  
Facing: Raised Flange
- Size: 2" - 12" (50 - 300mm)
  - 2120psi WOG @ 100°F
  - 146 bar @ 38°C

### MODEL 1606-C

#### CLASS 900

- 316 SS body/Teflon seal  
Facing: Raised Flange
- Size: 2" - 12" (50 - 300mm)
  - 2010psi WOG @ 100°F
  - 139 bar @ 38°C

## HOW TO ORDER CHEXTER® CHECK VALVE



## CHEXTER® CHECK VALVE

### MODEL 1645-A

#### CLASS 600

Carbon steel body/Buna-N seal

Facing: Ring Type Joint

- Size: 2" - 12" (50 - 300mm)
- 1480psi WOG @ 100°F
- 102 bar @ 38°C

### MODEL 1645-AC

#### CLASS 600

Carbon steel body/Teflon seal

Facing: Ring Type Joint

- Size: 2" - 12" (50 - 300mm)
- 1480psi WOG @ 100°F
- 102 bar @ 38°C

### MODEL 1645-AF

#### CLASS 600

Carbon steel body/Metal-to-Metal seal

Facing: Ring Type Joint

- Size: 2" - 12" (50 - 300mm)
- 1480psi WOG @ 100°F
- 102bar @ 38°C

### MODEL 1645-C

#### CLASS 600

316 SS body/Teflon seal

Facing: Ring Type Joint

- Size: 2" - 12" (50 - 300mm)
- 1440psi WOG @ 100°F
- 99 bar @ 38°C

### MODEL 1646-A

#### CLASS 900

Carbon steel body/Buna-N seal

Facing: Ring Type Joint

- Size: 2" - 12" (50 - 300mm)
- 2120psi WOG @ 100°F
- 146 bar @ 38°C

### MODEL 1646-AC

#### CLASS 900

Carbon steel body/Teflon seal

Facing: Ring Type Joint

- Size: 2" - 12" (50 - 300mm)
- 2120psi WOG @ 100°F
- 146 bar @ 38°C

### MODEL 1646-AF

#### CLASS 900

Carbon steel body/Metal-to-metal seal

Facing: Ring Type Joint

- Size: 2" - 12" (50 - 300mm)
- 2120psi WOG @ 100°F
- 146 bar @ 38°C

### MODEL 1646-C

#### CLASS 900

316 SS body/Teflon seal

Facing: Ring Type Joint

- Size: 2" - 12" (50 - 300mm)
- 2120psi WOG @ 100°F
- 146 bar @ 38°C

### MODEL 1696-A

#### CLASS 2000 LB. API WOG

Carbon steel body/Buna-N seal

Facing: Ring Type Joint

Unibody Style

- Size: 2" - 4" (50 - 100mm)
- 2000psi WOG @ 100°F
- 138 bar @ 38°C

### MODEL 1607-A

#### CLASS 1500

Carbon steel body/Buna-N seal

Facing: Raised Flange

Unibody Style

- Size: 2" - 10" (50 - 250mm)
- 3705psi WOG @ 100°F
- 255 bar @ 38°C

### MODEL 1647-A

#### CLASS 1500

Carbon steel body/Buna-N seal

Facing: Ring Type Joint

Unibody Style

- Size: 2" - 10" (50 - 250mm)
- 3705psi WOG @ 100°F
- 255 bar @ 38°C

### MODEL 1697-A

#### CLASS 3000 LB API WOG

Carbon steel body/Buna-N seal

Facing: Ring Type Joint

Unibody Style

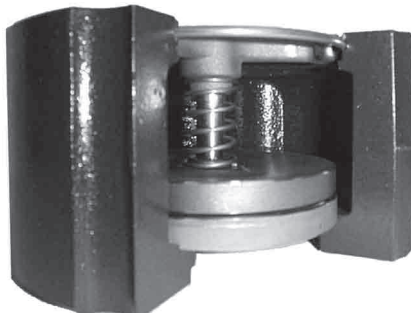
- Size: 2" - 4" (50 - 100mm)
- 3000psi WOG @ 100°F
- 207 bar @ 38°C

## SILENT CHECK VALVES - WAFER STYLE

Mueller Steam Specialty has redesigned our Silent Check Valves in order to offer better flow efficiency, lower pressure drop and improved cost. Designed with compact springs, the valve prevents flow reversal to eliminate water hammer, vibrations, system surges and noise. These units can be installed horizontally or vertically. Please consult factory for vertical downward flow applications.

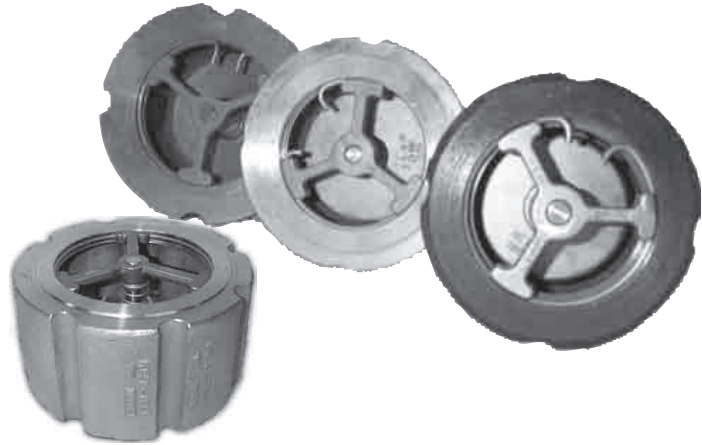
The latest Mueller Wafer Silent Check Valve keeps the traditional design for short face-to-face dimensions and fits conveniently between two matching flanges, easily replacing our existing 100 Series wafer silent check valves. Now with a more simplistic design, parts are easily field repairable or replaceable without special tooling.

The 92M, 94M and 96M series wafer checks are suitable for normal liquid, air and gas applications. These units are available in ductile iron, bronze, carbon steel and stainless steel, all with stainless steel trim as a standard.



### FEATURES:

- Units fully ANSI rated.
- Consistent cracking pressure: .5psi net
- Unique check valve seal is independent of flange gasket.
- Disc travel full open is approximately 1/4" per inch of valve size.
- Metal-to-metal seat meets or exceeds API 598 leakage requirements.
- Soft seat provides bubble tight shut off at as low as 5 ft. of water head.
- Simple design enables field parts replacement without special tools.
- PN16, PN25 and PN40 flange drilling available.



### 94 SERIES WAFER CHECK

#### MODEL 92M-IP

Ductile Iron body, Bronze Trim

- Size: 1" - 10" (25 - 250mm)
- 250psi WOG @ 100°F / 17 bar @ 38°C

#### MODEL 92M-HT

Stainless Steel body, Stainless Steel Trim

- Size: 8" - 12" (200 - 300mm)
  - 275psi WOG @ 100°F / 19 bar @ 38°C
- For use with Class 150 or 300 flanges

#### MODEL 94M-IT

Ductile Iron body, Stainless Steel Trim

- Size: 2" - 10" (50 - 250mm)
- For use with Class 150 or 300 flanges

#### MODEL 94M-IP

Ductile Iron body, Bronze Trim

- Size: 8" - 10" (200 - 300mm)
  - 640psi WOG @ 100°F / 44 bar @ 38°C
- For use with Class 150 or 300 flanges

#### MODEL 94M-HT

Stainless Steel body, Stainless Steel Trim

- Size: 1" - 10" (25 - 250mm)
  - 720psi WOG @ 100°F / 50 bar @ 38°C
- For use with Class 150 or 300 flanges

#### MODEL 96M-DT

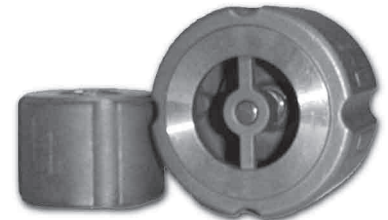
Carbon Steel body, Stainless Steel Trim

- Size: 1" - 6" (25 - 150mm)
  - 1480psi WOG @ 100°F / 102 bar @ 38°C
- For use with Class 600 flanges

#### MODEL 96M-HT

Stainless Steel body, Stainless Steel Trim

- Size: 1" - 6" (25 - 150mm)
  - 1440psi WOG @ 100°F / 99 bar @ 38°C
- For use with Class 600 flanges



92M-94M-96M SIZES 1" - 1/2" (25 - 40mm)

## SILENT CHECK VALVES - WAFER STYLE

Mueller Steam Specialty Silent Check Valves are designed with a spring assisted in-line disc that is guided both upstream and downstream. This design feature allows valve closure at zero flow. Flow reversal does not occur and check valve induced water hammer is eliminated.

The Mueller Wafer Silent Check Valve is designed with a short face-to-face dimension and fits conveniently between two matching flanges. Only a limited amount of space is needed for installation and installation time is reduced. The valves are used in a variety of liquid, air and gas applications. These units are available in cast iron, bronze, carbon steel, stainless steel and other alloys.

### STANDARD WAFER



#### MODEL 101 MAP CLASS 125

Cast Iron Body/Bronze Trim

- Size: 1" - 10" (25 - 250mm)
- 200psi WOG @ 150°F
- 13 bar @ 65°C

#### MODEL 103 MAP CLASS 250

Cast Iron Body/Bronze Trim

- Size: 1" - 10" (25 - 250mm)
- 500psi WOG @ 150°F
- 34 bar @ 65°C

#### MODEL 101 MAT CLASS 125

Cast Iron Body/Stainless Steel Trim

- Size: 1" - 10" (25 - 250mm)
- 200psi WOG @ 150°F
- 13 bar @ 65°C

#### MODEL 103 MAT CLASS 250

Cast Iron Body/Stainless Steel Trim

- Size: 1" - 10" (25 - 250mm)
- 500psi WOG @ 150°F
- 34 bar @ 65°C

#### MODEL 101 MBP CLASS 150

Bronze Body/Bronze Trim

- Size: 1" - 10" (25 - 250mm)
- 225psi WOG @ 150°F
- 15 bar @ 65°C

#### MODEL 103 MBP CLASS 300

Bronze Body/Bronze Trim

- Size: 1" - 6" (25 - 150mm)
- 500psi WOG @ 150°F
- 34 bar @ 65°C

#### MODEL 101 MDT CLASS 150

Carbon Steel Body/316 SS Trim

- Size: 1" - 10" (25 - 250mm)
- 285psi WOG @ 100°F
- 19 bar @ 38°C

#### MODEL 103 MDT CLASS 300

Carbon Steel Body/316 SS Trim

- Size: 1" - 10" (25 - 250mm)
- 740psi WOG @ 100°F
- 51 bar @ 38°C

#### MODEL 131 DT CLASS 600

Carbon Steel Body/316 SS Trim

- Size: 1" - 6" (25 - 150mm)
- 1480psi WOG @ 100°F
- 102 bar @ 38°C

#### MODEL 101 MHT CLASS 150

Carbon Steel Body/316 SS Trim

- Size: 1" - 10" (25 - 250mm)
- 275psi WOG @ 100°F
- 19 bar @ 38°C

#### MODEL 103 MHT CLASS 300

Carbon Steel Body/316 SS Trim

- Size: 1" - 10" (25 - 250mm)
- 720psi WOG @ 100°F
- 49 bar @ 38°C

#### MODEL 131 HT CLASS 600

Carbon Steel Body/316 SS Trim

- Size: 1" - 6" (25 - 150mm)
- 1440psi WOG @ 100°F
- 99 bar @ 38°C

### COMPACT WAFER



#### MODEL 91AP

For use with Class 125, 150, 250 or 300 flanges

Cast Iron Body/Bronze Trim

- Size: 1½" - 6" (40 - 150mm)
- 150psi WOG @ 150°
- 10 bar @ 65°

#### MODEL 91AT

For use with Class 125, 150, 250 or 300 flanges

Cast Iron Body/316 SS Trim

- Size: 1½" - 6" (40 - 150mm)
- 150psi WOG @ 150°
- 10 bar @ 65°

#### MODEL 92AP

For use with Class 125 or 150 flanges

Cast Iron Body/Bronze Trim

- Size: 8" - 12" (200 - 300mm)

#### MODEL 93AP

For use with Class 250 or 300 flanges

Cast Iron Body/Bronze Trim

- Size: 8" - 10" (25 - 250mm)
- 150psi WOG @ 150°F
- 10 bar @ 65°C

## SILENT CHECK VALVES - GLOBE STYLE

With the same design features as the wafer silent check valves, the Globe style valves offer a more streamlined flow and lower pressure drop figures.

The valves are designed for liquid, air and gas service\* and are available in a complete range of sizes, body trim materials and pressure classes. These valves are engineered to be partially open at 0.5psi and fully open at 1psi differential pressure at a liquid velocity of 8 feet per second.

Mueller Globe Style Silent Check Valves can be installed in horizontal or vertical flow. Each valve is 100% tested in accordance with ANSI, API and MSS standards.

### GLOBE STYLES

#### MODEL 105 MAP

##### CLASS 125

Cast Iron Body/Bronze Trim  
Size: 2" - 30" (50 - 750mm)

- 2" - 12" 200psi WOG @ 150°F  
13 bar @ 65°C
- 14" - 24" 150psi WOG @ 150°F  
10 bar @ 65°C



#### MODEL 107 MAP

##### CLASS 250

Cast Iron Body/Bronze Trim  
Size: 2" - 24" (50 - 600mm)

- 2" - 12" 500psi @ 150°F  
(to 300mm) 34 bar @ 65°C
- 14" - 24" 300psi @ 150°F  
(350 - 600mm) 20 bar @ 65°C

#### MODEL 105 MBP

##### CLASS 150

- Bronze Body/Bronze Trim
- Size: 2" - 30" (50 - 750mm)
  - 225psi WOG @ 150°F
  - 15 bar @ 65°C

#### MODEL 109 MBP

##### CLASS 300

- Bronze Body/Bronze Trim
- Size: 2" - 20" (50 - 500mm)
  - 500psi WOG @ 150°F
  - 34 bar @ 65°C

#### MODEL 105 MDT

##### CLASS 150

- Carbon Steel Body/316 SS Trim
- Size: 2" - 30" (50 - 750mm)
  - 285psi WOG @ 100°F
  - 19 bar @ 38°C

#### MODEL 109 MDT

##### CLASS 300

- Carbon Steel Body/316 SS Trim
- Size: 2" - 24" (50 - 600mm)
  - 740psi WOG @ 100°F
  - 51 bar @ 38°C

#### MODEL 113 DT

##### CLASS 600

- Carbon Steel Body/316 SS Trim
- Size: 2" - 10" (50 - 250mm)
  - 1480psi WOG @ 100°F
  - 102 bar @ 38°C

#### MODEL 117 DT

##### CLASS 1500

- Carbon Steel Body/316 SS Trim
- Size: 2" - 24" (50 - 600mm)
  - 3705psi WOG @ 100°F
  - 255 bar @ 38°C

#### MODEL 105 MHT

##### CLASS 150

- 316 SS Body/316 SS Trim
- Size: 2" - 30" (50 - 750mm)
  - 275psi WOG @ 100°F
  - 18 bar @ 38°C

#### MODEL 109 MHT

##### CLASS 300

- 316 SS Body/316 SS Trim
- Size: 2" - 24" (50 - 600mm)
  - 720psi WOG @ 100°F
  - 49 bar @ 38°C

#### MODEL 113 HT

##### CLASS 600

- 316 SS Body/316 SS Trim
- Size: 2" - 10" (50 - 250mm)
  - 1440psi WOG @ 100°F
  - 99 bar @ 38°C

#### MODEL 117 HT

##### CLASS 1500

- 316 SS Body/316 SS Trim
- Size: 2" - 24" (50 - 600mm)
  - 3600psi WOG @ 100°F
  - 248 bar @ 38°C

### NPT TYPE

#### MODEL 303 AP

##### CLASS 250

- Cast Iron Body/Bronze Trim  
EPDM Soft Seat Option Available
- Size: 1/4" - 2" (8 - 50mm)
  - 200psi WOG @ 150°F
  - 13 bar @ 65°C



#### MODEL 303 AT

##### CLASS 250

- Cast Iron Body/316 SS Trim  
EPDM Soft Seat Option Available
- Size: 1/4" - 2" (8 - 50mm)
  - 200psi WOG @ 150°F
  - 13 bar @ 65°C

#### MODEL 303 BP

##### CLASS 300

- Bronze Body/Bronze Trim  
Optional EPDM Soft Seat Available
- Size: 1/4" - 2" (8 - 50mm)
  - 400psi WOG @ 150°F
  - 27 bar @ 65°C

#### MODEL 303 HT

##### CLASS 300

- 316 SS Body/316 SS Trim  
Optional Viton® Soft Seat Available
- Size: 1/4" - 2" (8 - 50mm)
  - 600psi WOG @ 100°F
  - 41 bar @ 38°C

\* Do not use directly on discharge of reciprocating compressors.

## SILENT CHECK VALVES

### HOW TO ORDER

#### MODEL NUMBERS

These numbers describe valves furnished with standard trim. For any other type of trim refer to "BODY MATERIALS" table and "TRIM MATERIALS" table on this page. Substitute the correct letter indicating the trim materials which you require.

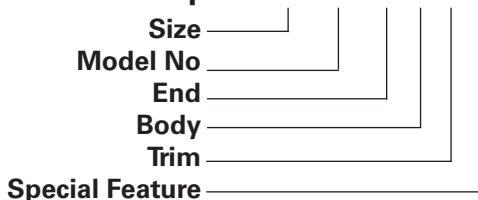
BODY MATERIAL	TRIM	ANSI CLASS	COMPACT WAFER TYPE	FULL FACE WAFER TYPE	GLOBE TYPE	NPT
Cast Iron	Bronze	125	91AP*			
Cast Iron	Bronze	125	92AP+			
Cast Iron	Bronze	250	93AP+			
Cast Iron	Stainless Steel	125	91AT*			
Cast Iron	Bronze	125		101MAP	105MAP	
Cast Iron	Bronze	250		103MAP	107MAP	303AP
Cast Iron	Stainless Steel	250				303AT
Bronze	Bronze	150		101MBP	105MBP	
Bronze	Bronze	300		103MBP	109MBP	303BP
Carbon Steel	Stainless Steel	150		101MDT	105MDT	
Carbon Steel	Stainless Steel	300		103MDT	109MDT	
Carbon Steel	Stainless Steel	600		131DT	113DT	
Carbon Steel	Stainless Steel	1500			117DT	
316 SS	Stainless Steel	150		101MHT	105MHT	
316 SS	Stainless Steel	300		103MHT	109MHT	303HT
316 SS	Stainless Steel	600		131HT	113HT	
316 SS	Stainless Steel	1500			117HT	

\* Sizes 1½" - 6" (40 - 150mm)  
 + Sizes 8" - 12" (200 - 300mm)  
 \*\* DuPont Trademark

Description	Code
Cast Iron (Semi-Steel)	A
Bronze, 85-5-5-5	B
Bronze, "M" Metal	C
Carbon Steel, Gr. WCB	D
Carbon Moly, Gr. WCI	E
Stainless, Type 410	F
Stainless, Type 304	G
Stainless, Type 316	H
Ductile Iron	I
Aluminum	J
Other - Specify	X
<b>Body Material</b>	
Bronze, 85-5-5-5	P
Bronze, "M" Metal	Q
Stainless, Type 410	R
Stainless, Type 304	S
Stainless, Type 316	T
Monel	U
Carbon Steel	V
Other - Specify	X
<b>Trim Material</b>	

Soft Seat available in EPDM, Buna-N and Viton®\*\*. Consult Factory.

#### Model # Code Example 8 101 M A P X



Consult factory for all special features. If no special features are required use "O" in place of "X" in the ordering and tagging number.

#### Ordering Information

**Important!** To assist you in ordering the proper product for your application, the following information is necessary: operating pressure, temperature, flow rates and/or velocity and the type of service used.



## DOUBLE DISC CHECK VALVES - SURE CHECK®

The unique torsion spring arrangement on this valve forces the heel of the discs against the seat for a complete seal. It also helps close the disc on flow stoppage, minimizing flow reversal and water hammer.

Elastomer seats for each disc are molded to the body allowing complete sealing. Metal-to-metal seating is also available on request. The dual shaft design provides a positive disc stop. This feature minimizes flutter and wear at the disc hinge and maximizes the life of the valve.

All steel, stainless steel and alloy models conform to API 594 and API 6D specifications. (Also available as LOCKEND. See pages 27 & 28)

The Sure Check valves are designed for horizontal and vertical flow applications. Units are available in cast iron, ductile iron, carbon steel, stainless steel and other alloys.

### SURE CHECK®

#### MODEL 71

##### CLASS 125

Cast Iron Body/Bronze Disc

- Size: 2" - 54" (50 - 1350mm)
- SS Discs available
 

2" - 12"	200psi @ 150°F
(50 - 300mm)	13 bar @ 65°C
14" - 54"	150psi @ 150°F
(350 - 7350mm)	10 bar @ 65°C



#### MODEL 71U

Ductile Iron Body/Bronze Disc

U.L. & FM Approved

- Size: 4" - 12" (100 - 300mm)
- 175psi WOG @ 150°F
- 12 bar @ 65°C

#### MODEL 72

##### CLASS 150

Bronze, 2" - 54" (50 - 1350mm) Ductile Iron, Carbon Steel, Stainless Steel bodies available

- Size: 2" - 56" (50 - 1400mm)
- 285psi WOG @ 100°F\*
- 19 bar @ 38°C\*

#### MODEL 74

##### CLASS 300

Bronze, Carbon Steel, Stainless Steel bodies available

- Size 2" - 48" (50 - 1200mm)
- 740psi WOG @ 100°F\*
- 51 bar @ 38°C\*

#### MODEL 76

##### CLASS 600

Carbon Steel, Stainless Steel bodies available

- Size: 2" - 42" (50 - 1050mm)
- 1480psi @ 100°F
- 102 bar @ 38°C

#### MODEL 77

##### CLASS 900

Carbon Steel, Stainless Steel bodies available

- Size: 2" - 24" (50 - 600mm)
- 2220psi WOG @ 100°F\*
- 151 bar @ 38°C\*

#### MODEL 78

##### CLASS 1500

Carbon Steel, Stainless Steel bodies available

- Size: 2" - 18" (50 - 450mm)
- 3705psi WOG @ 100°F\*
- 255 bar @ 38°C\*

#### MODEL 79

##### CLASS 2500

Carbon Steel, Stainless Steel bodies available

- Size: 2" - 12" (50 - 300mm)
- 6170psi WOG @ 100°F
- 425 bar @ 38°C

**\* Pressure-Temperature Rating for Carbon Steel Models only**

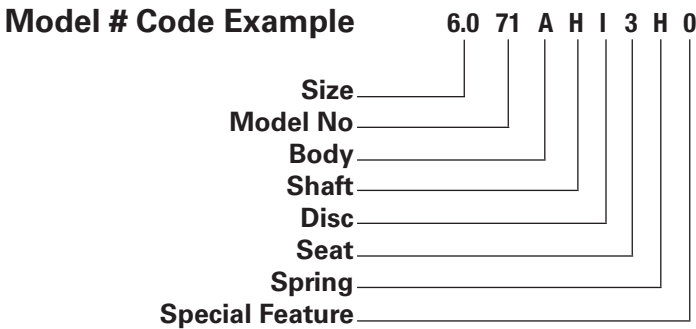
Consult factory for Stainless Steel or other materials.

## DOUBLE DISC CHECK VALVES - SURE CHECK®

### HOW TO ORDER

#### EXAMPLE

Six inch, Model 71, cast iron body, 316 SS shaft, ductile iron disc, Buna-N seat, 316 SS spring, no special features.



Consult factory for all special features. If no special features are required, use "O" in place of "X" in the ordering and tagging number.

### Ordering Information

**Important:** To assist you in ordering the proper product for your application, the following information is necessary: operating pressure, temperature, flow rates and/or velocity and the type of service used.

	MATERIAL	CODE	MATERIAL	CODE
BODY	Carbon Steel	D	Bronze B-62	B
	Cast Iron	A	Aluminum	J
	316 SS	H	Ductile Iron	I
SHAFT	316 SS	H	Monel	Q
DISC	Carbon Steel	D	316 SS	H
	Ductile Iron	I	Aluminum	J
	Bronze B-62	B	Overlay -See "Special Feature"	X
SEAT	Buna-N (-20° TO 250° F)	3	Monel Overlay	Q
	Neoprene (-40° TO 250° F)	8	316L SS Overlay	T
	EPDM (-40° TO 300° F)	6	410 SS Overlay	F
	Viton®* (-20° TO 400° F)	4	Aluminum-Bronze Overlay	K
			Stellite #6 Overlay	V
Repeat Body Material code in this position for metal-to-metal seat without overlay.				
SPRING	316 SS (up to 250° F)	H	Inconel 600 (up to 650° F)	W
	Inconel X (up to 1000° F)	X	Monel	Q

### MATERIAL SPECIFICATIONS

#### BODY

Cast Iron ASTM A126-B (Semi- Steel)  
Carbon Steel ASTM A216 WCB  
316 SS (CF8M) ASTM A351  
Bronze (85-5-5-5) ASTM B62  
Aluminum ASTM B26-52T Gr. SG 70A  
Ductile Iron ASTM A536

#### SHAFT

316 SS ASTM A479  
Monel ASTM B164

#### DISCS

Ductile Iron ASTM A536  
Bronze (85-5-5-5) ASTM B62  
316 SS (CF8M) ASTM A351  
Carbon Steel ASTM A216 WCB  
Aluminum ASTM B26-52T Gr. SG 70A

#### ELASTOMETER SEATS

Buna-N  
Neoprene  
EPDM  
Viton®

#### SPECIAL FEATURES

Welded Metal Overlays  
Micron Smooth Finished Ends  
Ring Joint Ends  
Epoxy Coated  
Drain Connections

Consult Factory, we can overlay with most weldable materials.

## BUTTERFLY VALVES

Mueller Steam Specialty Butterfly Valves are designed for ANSI Class 125/150 flanges and in compliance with MSS-SP-25, MSS-SP-67, API-609 and MIL-V-22122C ships, Type 1, Classes A-D. MSS Butterfly Valves are also approved by the American Bureau of Shipping (ABS).

All valves are 100% factory tested to guarantee bi-direction, drop tight shutoff at full rated pressure.

The Mueller Steam Specialty Butterfly Valve offers numerous features, such as blow out proof stems, primary and secondary stem seals and multiple combinations of materials and configurations.

Our butterfly valve requires no modifications for vacuum service (Models 51, 52, 51M, 52M, 53 & 58).

Ease of repair and actuation are just a few more reasons why Mueller Steam Specialty is an industry leader.

### MODEL 53

Semi-Lug Style  
Carbon or Stainless Steel,  
Seats: Buna-N, EPDM, PTFE  
Viton®

Disc: Bronze, Ductile Iron, 316SS  
Stems: 316 SS,  
Cartridge Seat

- Size: 2" - 12" (50 - 300mm)
- 250psi WOG @ 100°F
- 17 bar @ 38°C



### MODEL 51

Wafer Style, Cast Iron Body,  
Seats: Buna-N, EPDM, Viton®, PTFE  
Stems: 416 SS with Ductile Iron or Bronze Discs, 316 SS  
with 316 SS Discs

- Size: 2" - 12" (50 - 300mm)
- 250psi WOG @ 100°F
- 17 bar @ 38°C



### MODEL 51M

Wafer Style, Cast Iron Body,  
Seats: Buna-N, EPDM, Viton®, PTFE,  
Stems: 416 SS with Ductile Iron or Bronze Discs, 316 SS  
with 316 SS Discs

- Size: 14" - 24" (350 - 600mm)
- 150psi WOG @ 150°F
- 10 bar @ 65°C

### MODEL 52

Full Lug Style, Ductile Iron Body  
Seats: Buna-N, EPDM, Viton®, PTFE  
Stems: 416 SS with Ductile Iron or Bronze Discs, 316 SS  
with 316 SS Discs

- Size: 2" - 12" (50 - 300mm)
- 250psi WOG @ 150°F
- 17 bar @ 65°C



### MODEL 52M

Full Lug Style, Ductile Iron Body  
Seats: Buna-N, EPDM, Viton®, PTFE  
Stems: 416 SS with Ductile Iron or Bronze Discs, 316 SS  
with 316 SS Discs Cartridge Seat

- Size: 14" - 36" (350 - 900mm)
- 150psi WOG @ 150°F
- 10 bar @ 65°C

### MODEL 87

Wafer Style, Ductile Iron Body, 2" - 24",  
Seats: Buna-N, EPDM, Viton®  
Stems: 416 SS, 316 SS,  
Disc: Aluminum Bronze, Stain-  
less Steel

- Size: 2" - 12" (50 - 300mm)
- 200psi WOG @ 100°F
- 14 bar @ 38°C
- Size: 14" - 24" (350 - 600mm)
- 150psi (10 bar) WOG @  
100°F WOG @ (38°C)



### MODEL 88

Lug style, Ductile Iron Body,  
2" - 24"  
Seats: Buna-N, EPDM, Viton®  
Stems: 416 SS, 316 SS  
Disc: Aluminum Bronze, Stainless  
Steel

- Size: 2" - 12" (50 - 300mm)
- 200psi WOG @ 100°F  
13 bar @ 38°C
- Size: 14" - 24" (350 - 600mm)
- 150psi WOG @ 100°F  
10 bar @ 38°C



### MODEL 58

Full Flanged, Carbon Steel or Stainless Steel Body  
Seats: Buna-N, EPDM, Viton®  
Stems & Disc: 316 SS, 416SS

- Size: 14" - 18" (350 - 450mm)
- 150psi WOG @ 100°F
- 10 bar @ 38°C



## HOW TO ORDER MUELLER STEAM SPECIALTY MODEL 87M, 88M BUTTERFLY VALVES

**Example:** 04.0-88IHH31

This is a 4" lugged body valve with a ductile iron body, 316 SS stem, 316 SS Disc, Buna-N Seat and a ten position handle

**4.0 - 88 - IHH - 3 - 1**

**SIZE:** \_\_\_\_\_

**MODEL:** \_\_\_\_\_

**87**-Full Wafer *(Replaces previous Model 65M)*

**88**-Full Lug *(Replaces previous Model 66M)*

**BODY:** \_\_\_\_\_

**I**-Ductile Iron

**STEM:** \_\_\_\_\_

**H**-316SS *(Available 2" – 12" only. Specify 431 SS for 14" – 48" sizes)*

**N**-416SS *(Available 2" – 24" only. Specify 431 SS for 30" – 48" sizes)*

**P**-431SS

**DISC:** \_\_\_\_\_

**H**-316SS

**B**-Aluminum Bronze

**SEAT:** \_\_\_\_\_

**3**-Buna-N

**4**-Viton

**6**-EPDM *(Must Specify 316 SS Disc)*

**7**-Teflon (Buna-N Base) *(Must Specify 316 SS Disc)*

**OPERATOR:** \_\_\_\_\_

**1**- 10-Position Lever handle *(Lockable in both open and closed positions)*

**5**-Gear Operator *(Reccomended for 10" and above)*

**LOCXEND® - GROOVED END PRODUCTS**

For fast and economical installation of piping systems, grooved end equipment is often specified. The Mueller Steam Specialty LOCXEND® family of products is the economical choice. With over 60 years of experience in flow control products, Mueller Steam Specialty has designed and produced a complete line of grooved end pipeline products. This line includes the Sure Check® check valve, the Mueller butterfly valve, pump protection products (Control-Chek® combination valve and the suction diffuser) and both "Y" and Tee strainers.

As with all Mueller products, the LOCXEND® products are 100% hydrostatically tested so that our customers are assured of consistent high quality materials and construction.

**MODEL 74G**

Ductile Iron Body Sure Check®,  
Bronze Discs,  
Grooved End Connections  
Seat: Buna-N Vulcanized Seat

- Size: 3" - 6" (80 - 150mm)
- 640psi WOG @ 100°F
- 44 bar @ 38°C
- 8" - 12"  
500psi WOG @ 100°F



**MODEL 89GEN**

Butterfly Valve, Ductile Iron Body with Epoxy Coating  
Grooved End Connections, EPDM Encapsulated Ductile  
Iron Disc

- Size: 2½" - 12" (65 - 300mm)
- 175psi CWP @ 275°F
- 1.2 bar @ 135°C



**MODEL 722G**

Ductile Iron Control-Chek®,  
Combination Valve,  
Grooved End Connections  
Bolted Yoke Cover,  
with Position Indicator

- Size 2" - 12" (50 - 300mm)
- 2" - 10"      640psi WOG @ 100°F  
(50- 250mm)    44 bar @ 38°C
- 12"            500psi WOG @ 100°F  
(300mm)        34 bar @ 38°C



**MODEL 42T-G-Q**

Ductile Iron Body "Tee" Strainer, Grooved End Connections,  
Clamped Ductile Iron Cover

- Size: 2" - 12" (50 - 300mm)



2" - 5" (50 - 125mm)	750psi WOG @ 100°F 51 bar @ 38°C
6" (150mm)	700psi WOG @ 100°F 48 bar @ 38°C
8" (200mm)	600psi WOG @ 100°F 41 bar @ 38°C
10" (250mm)	500psi WOG @ 100°F 34 bar @ 38°C
12" (300mm)	400psi WOG @ 100°F 27 bar @ 38°C

**MODEL 1011G**

**CLASS 150**  
Ductile Iron Body Suction  
Diffuser  
Grooved Inlet,  
Flanged Outlet, Knob Cover  
through 8" x 8"  
(200 x 200mm)  
Bolted available for all sizes

- Size: 2" x 1¼" - 12" x 12"  
(50 x 32mm - 300 x 300mm)
- 300psi WOG @ 100°F
- 20 bar @ 38°C



**MODEL 758G**

Ductile Iron Body "Y" Strainer  
Grooved End Connections  
Bolted Ductile Iron Cover

- Size: 2" - 12" (50 - 300mm)
- 640psi WOG @ 100°F
- 44 bar @ 38°C



## LOCXEND® - GROOVED END PRODUCTS

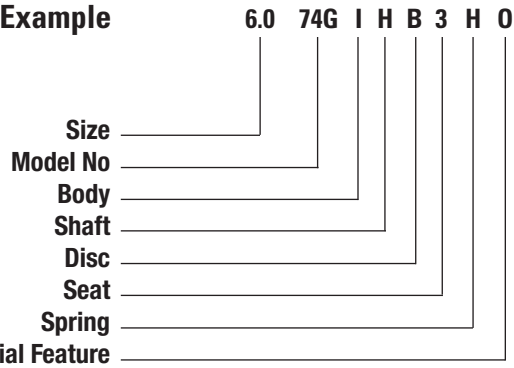
### HOW TO ORDER

Since the LOCXEND® Sure Check® Valve can be ordered with a choice of disc and seat materials, the table shown should be used for ordering.

**Example:** Six inch Model 74G, with ductile iron body, bronze disc, Buna-N seat, 316 SS spring, with no special features would have the ordering number shown with the table.

MATERIAL		CODE
BODY	Ductile Iron	I
SHAFT	316 Stainless Steel	H
DISC	Carbon Steel	D
	Ductile Iron	I
	Bronze B62	B
	316 Stainless Steel	H
SEAT	Buna-N (-20 to 250° F)	3
	Neoprene (-40 to 250° F)	8
	EPDM (-40 to 300° F)	6
	Teflon* (-200 to 450° F)	7
	Viton®* (-20 to 400° F)	4
SPRING	316 Stainless Steel	H

#### Model # Code Example



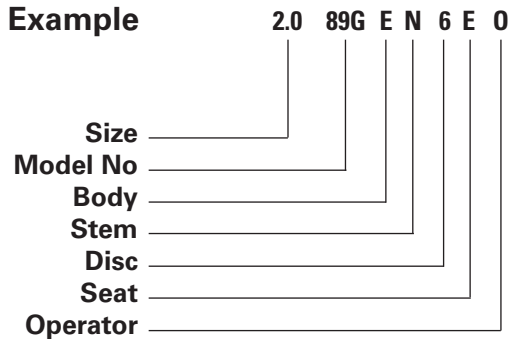
Consult factory for all special features. If no special features are required use "O" in place of "X" in the ordering and tagging number.

The LOCXEND® Butterfly Valve can be ordered with a choice of operators. The table below should be used when ordering.

**Example:** Two inch Model 89GEN with EPDM encapsulated disc and no operator.

DESCRIPTION		CODE
BODY	Ductile Iron, Epoxy Coated	E
STEM	316 Stainless Steel	H
	416 Stainless Steel	N
DISC	Ductile Iron, Buna-N Encapsulated	3
	Ductile Iron, EPDM Encapsulated	6
OPERATOR	Repeat Body code for seat	E
	Without operator	0
	10 position handle	1
	10 position handle with memory	2
	Infinite position handle	3
	Infinite position handle with memory	4
	Gear operator	5
	Electric actuator	6
	Hydraulic actuator	7
	Pneumatic actuator	8
Other operator	9	

#### Model # Code Example



#### Ordering information

**Important:** To assist you in ordering the proper LOCXEND® product for your application, the following information is necessary: operating pressure, temperature, flow rates and/or velocity and the type of pump used in the installation. If special screens are required for suction diffusers, "Y" Strainers or "Tee" Strainers, the particle retention size should be specified. Advise factory when corrosive fluids are involved.



**Complete Mueller Steam Specialty Representative  
information available at:**

**[www.muellersteam.com](http://www.muellersteam.com)**



*A Watts Water Technologies Company*

C-Mueller 0918



**USA:** St. Pauls, NC • Tel. 1-800-334-6259 • Fax 1-800-421-6772 • [www.muellersteam.com](http://www.muellersteam.com)

© 2011 Mueller Steam Specialty